

Tuba

SINFONIA

Durata circa 6'27"
Grado 5.0

Amilcare Ponchielli (1834-1886) Op. 106
Versione per banda sinfonica di Emiliano Gusperti

Andante un poco mosso (♩ = 70)

10

ff *p* **3** 5-7 *Fig. 2*

16

pp *f* *pp*

26

deciso assai

Allegro vivo (♩ = 132)

ff **1** 17-22 **6**

32

Cl. B.

p *f*

39

mf cresc. **7** 42-48

51

ff

56

pp

61

6 65-70

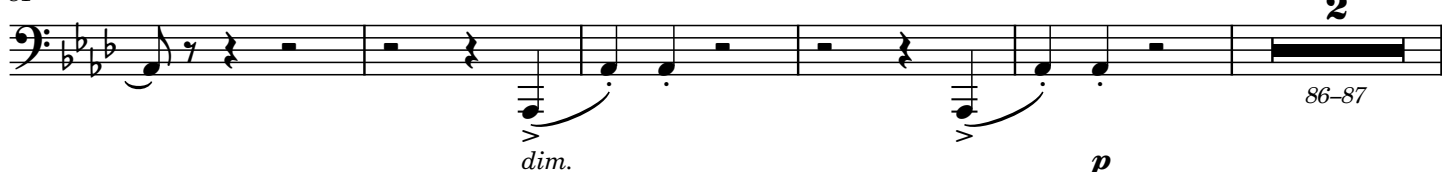
71



76



81



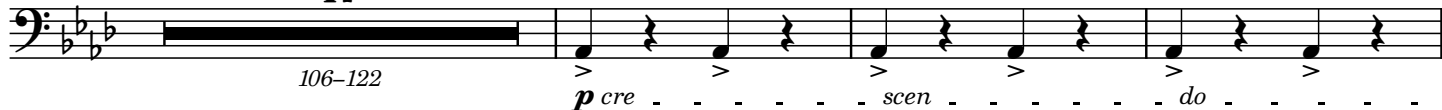
88



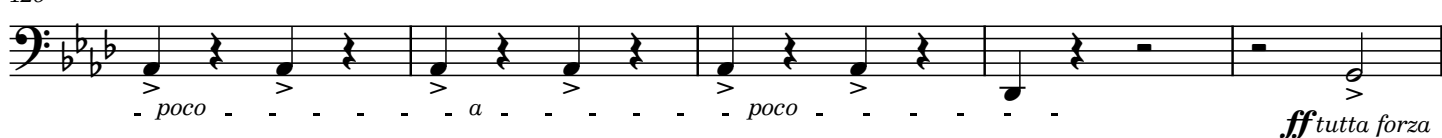
101



17



126



131



136



141



149



156



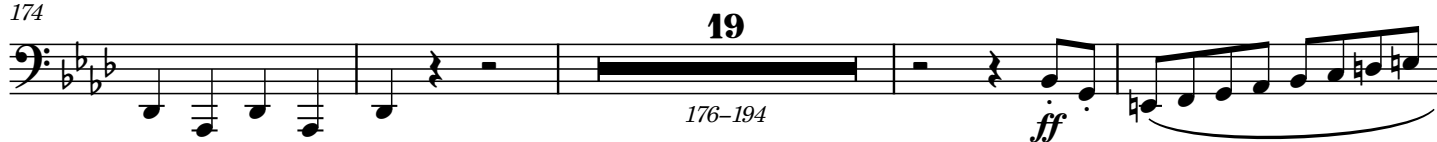
162



168



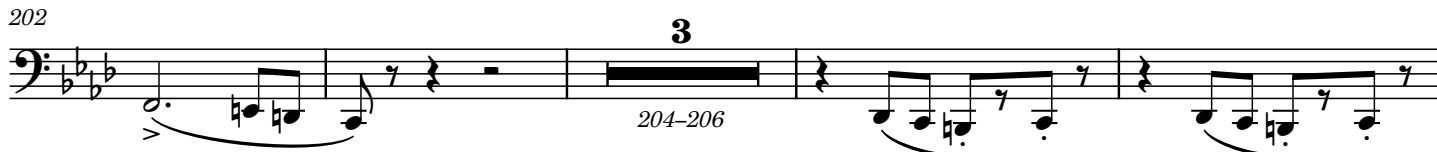
174



197



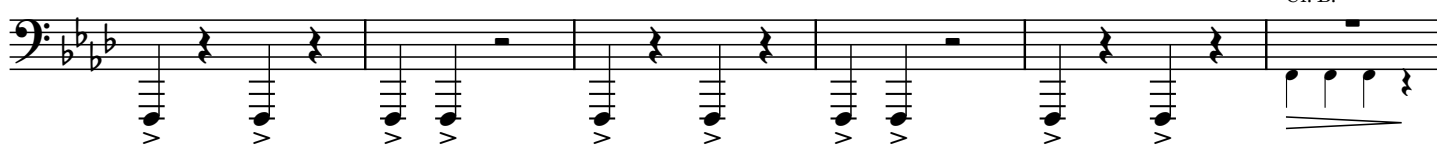
202



209



214

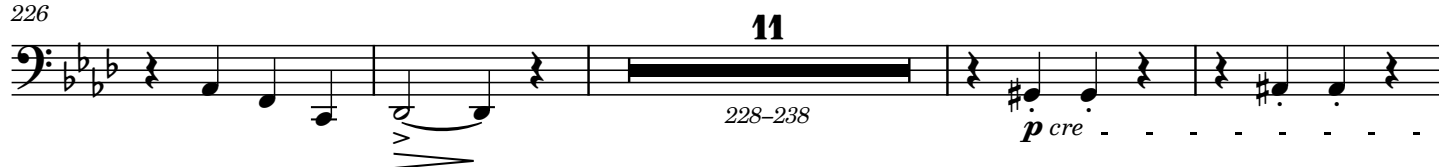


220



Cl. B.

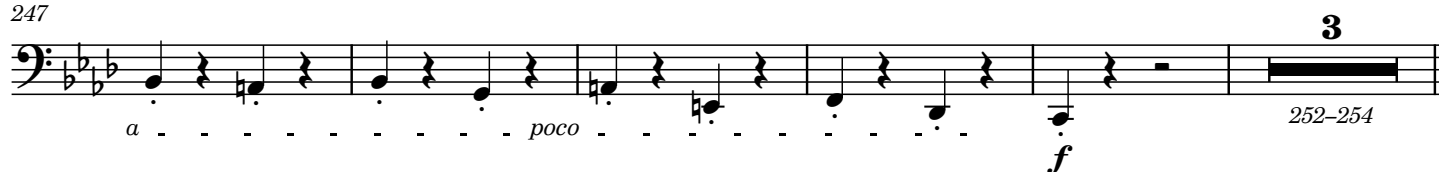
226



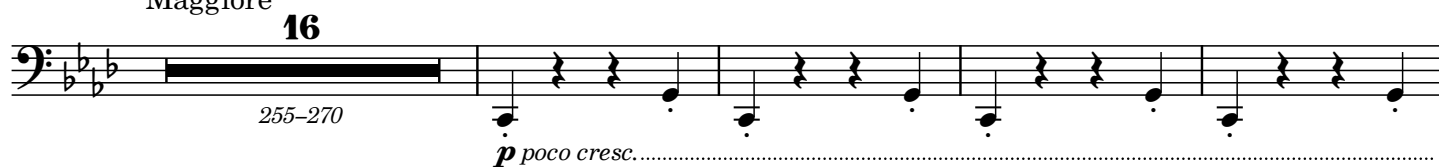
241



247



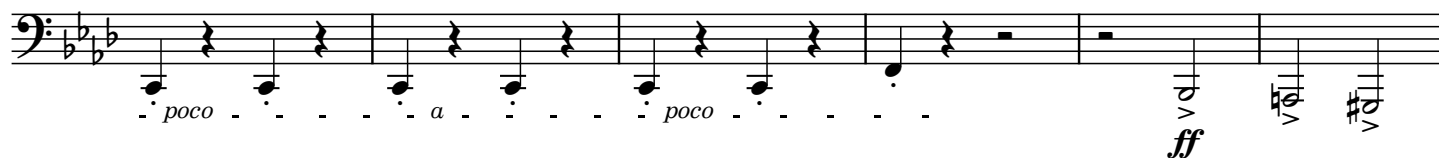
Maggiore



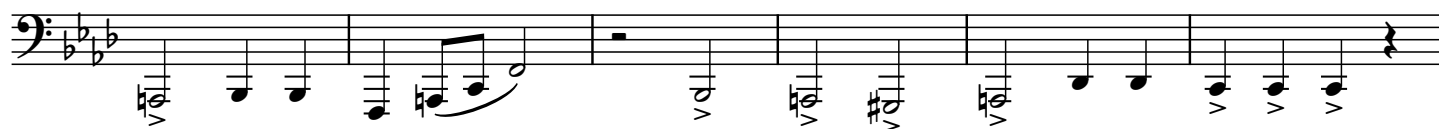
275



296



302



308



313



[illegible][illegible]

Musical notation for the bass line of "The Rose Tree" in G major, 3/4 time. The key signature has one sharp (F#) and the time signature is 3/4. The melody consists of eighth and quarter notes across four measures.

[illegible]

The bass line is written on a single staff with a bass clef and a key signature of two flats (B-flat and E-flat). The melody consists of six measures, each containing a half note followed by a quarter rest. The notes are G2, F2, E2, D2, C2, and B1, which correspond to the lyrics 'The', 'rose', 'tree', 'grew', 'up', 'in', 'the', 'spring'. The notes are marked with a 'v' (accents) and a 'z' (pedal point).

[illegible][illegible]

The bass line of 'The Rose Tree' is written in 3/4 time with a key signature of one flat (B-flat). The melody consists of five measures. The first measure has a whole note G2. The second measure has a whole note G2. The third measure has a whole note G2. The fourth measure has a whole note G2. The fifth measure has a whole note G2. The bass line is written on a single staff with a bass clef.